

## Nearside Signal PCB Spares & Detection Platform Compatibility



## Technical Advice Note No. 22



PRODUCT SOLUTIONS FOR  
INTELLIGENT TRAFFIC SYSTEMS

Table of Contents	2
Introduction	3
Document Change Information	3
92X PCBs	4
PCB Compatibility Chart	5
PCB Repairable Chart	6
Previous & Current Platforms	7
Nearside Products	8

## Introduction

This document has been produced to help overcome difficulties that may be encountered when looking at changing out PCB's on nearside signals that may have failed.

Over a number of years AGD have through continuous development and user specific changes had a number of different Issue levels for specific PCB's. These are now tabulated for the most common products further in this document.

## Document Changes

Issue	Amendment Details	Date of Issue	By
A	First Issue of this document		GB
B	Update of document		MP
C	Incorrect part number on Page 4 - changed from CB-095 to CB-094 Included PCB numbers for AGD925 Mini Puffin Repeater in main chart page 5	28/01/2010	MP
D	Remove comment ref mini puffin repeater CB243&CB244 being DCM compatible and add comment when replacing individual older CB164 & CB165 PCB's the new ones need to be in pairs as not individually backward compatible.	28/03/2010	MP
2	Update to latest format and issue – no changes to technical content.	18/10/2010	MP
3	DCR4701: Update to cover latest PCB additions and add detection platform compatibility	04/02/2015	GB
4	DCR4975: Update to list of boards (page 5) as some boards are no longer serviceable.	27/11/2015	CS
5	DCR6001. PCB Compatibility Charts updated on page 5 & 6. Page 7 added.	24/05/2019	CB
6	DCR6319. PCB Compatibility Chart updated. PCB repair chart added and 200/220 product series.	14/07/2020	CB

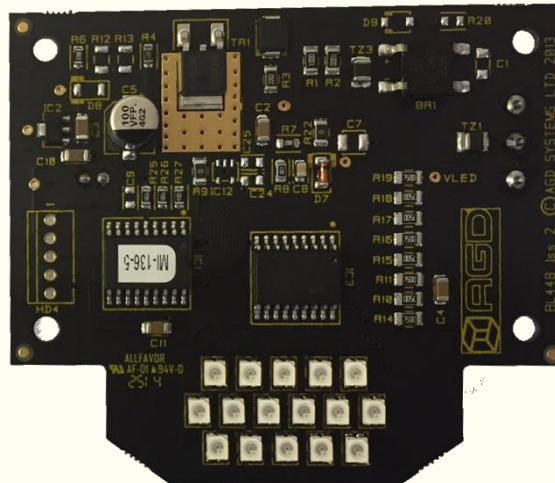
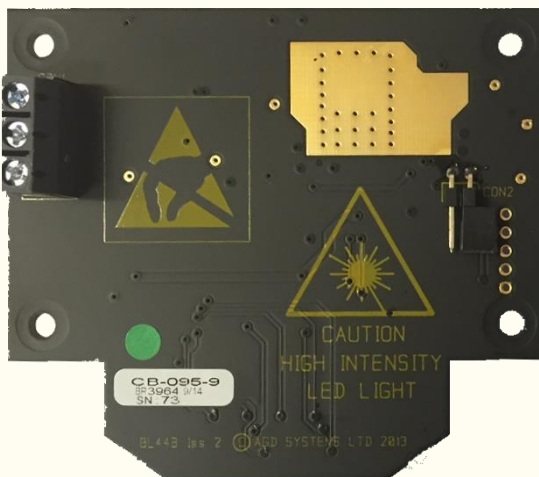
## 92X PCBs

Only two parts of the 92x series of nearside signals are supported for end user replacement.

The PSU that is located on the rear of the LED aspect housing can be replaced in the field. Using a new CB-094 please follow the instructions that are supplied as failure to set this item up correctly can result in failure of the LEDs or the reduced operational life of the LEDs



The new CB-095 WAIT LED aspect design is a direct replacement for the original design.



## 94X Integrated PSU and LED Array

Only PCB's that are fed directly from the termination block to the PCB aspect are supported.

If both aspects are connected together by a white jumper cable, you will need to replace both PCB's and Cable Looms. Alternatively, please return to AGD for evaluation and repair.

## PCB Compatibility Chart

Nearside Signal PCBs		
Previous Generations	Description	Current Generations
CB-094	AGD92x series 48V PSU	CB-094
CB-095	AGD92x series Wait Indicator	CB-095 (latest issue)
CB-164	Red puffin mini repeater 48V	None
CB-165	Green puffin mini repeater 48V	None
CB-176	WAIT indicator	CB-277
CB-181	Halo Wait indicator 48V	CB-281
CB-190	Red Puffin Aspect 48V	CB-235
CB-191	Green Puffin Aspect 48V	CB-236
CB-193	Red Toucan Aspect 48V	CB-237 (latest issue)
CB-194	Green Toucan Aspect 48V	CB-238
CB-207	RED Puffin Aspect 48V	CB-235
CB-208	Green Puffin Aspect 48V	CB-236
CB-209	Red Toucan Aspect 48V	CB-237 (latest issue)
CB-210	Green Toucan Aspect 48V	CB-238
	Red Pegasus Aspect 48V	CB-229
	Green Pegasus Aspect 48V	CB-230
CB-243	Red puffin mini repeater 48V	None
CB-244	Green puffin mini repeater 48V	None
CB-245	Halo Wait indicator 48V	CB-281
	WAIT indicator 12V	CB-247
	5LED WAIT Indicator 48V	SA-146
	Red Puffin Aspect 12V	CB-278
	Green Puffin Aspect 48V	CB-279
	Temp Red Far side Aspect	CB-297
	Temp Green Far side Aspect	CB-298

## PCB Repairable Chart

Please note that if a PCB is not listed below then it should be considered as discontinued and therefore not repairable.

### Nearside Signal PCBs

Current	Repairable	Description
CB-094	Yes	AGD92x series 48V PSU
CB-095	Yes	AGD92x series Wait Indicator
CB-235	Yes	Red puffin Aspect 48V
CB-236	Yes	Green Puffin Aspect 48V
CB-237	Yes	Red Toucan Aspect 48V
CB-238	Yes	Green Toucan Aspect 48V
CB-247	Yes	WAIT Indicator 12V
CB-277	Yes	5LED WAIT Indicator 48V
CB-281	Yes	Halo Wait Indicator 48V
CB-318	Yes	5LED WAIT Indicator 48V

## Previous & Current Platforms

Where an item is marked as 'serviceable' this indicates an assessment protocol exists to ascertain its repairability. During this process the item may still fail a test and become Beyond Economic Repair (BER).

If assessed as repairable the item will be repaired and tested before return. The repaired item is subject to a one year return to base warranty period.

### Compatibility Chart

Previous Generation	Description	Serviceable	Current Generation
AGD200	X-band MVD	No	306
AGD200 livewire	MVD for VMS applications	No	335
AGD201	Temp Radar	No	302
AGD206	X-band MVD	Yes (limited)	306
AGD220	On crossing	No	326
AGD226	X-band on-crossing	Yes (limited)	326
AGD300	K-Band MVD	No	318
AGD305	K-Band MVD narrow beam	No	318
AGD306	K-Band MVD wide beam	No	N/A
AGD318-501-002	Dual output radar with mating lead	Yes	AGD318-511-022
AGD318-502-002	Dual output radar with flying lead	Yes	AGD318-512-022
AGD318-503-001	Single output radar with mating lead	Yes	AGD318-513-021
AGD318-504-001	Single output radar with flying lead	Yes	AGD318-514-021
AGD400	Stop Line detector	No	316
AGD402	Dual Zone detector	No	N/A
AGD410	K-Band Scoot detector	No	N/A
AGD420	Kerbside detector	No	641
AGD910	ILD diagnostics unit	No	N/A
AGD605	Stop Line detector	No	316
AGD620	Kerbside detector	No	641
AGD625	Kerbside detector	No	641
AGD640	Stereo vision kerbside	Yes (limited)	641
AGD920	Red/Green nearside signal (Puffin)	No	940
AGD921	Demand unit	No	941



PRODUCT SOLUTIONS FOR  
**INTELLIGENT TRAFFIC SYSTEMS**

AGD922	Red/Green nearside signal (Toucan)	No	942
AGD923	Red/Green nearside signal (Pegasus)	No	949
	Pelican WAIT demand unit	No	924
AGD925	Red/Green nearside signal small repeater	No	N/A
AGD926	Combined Red/Green & Demand Puffin unit	No	946
AGD927	Combined Red/Green & Demand Toucan unit	No	947

All goods are subject to AGD Terms & Conditions of Sale (please refer to AGD website for current version).



Product	Screen	Screen Part No
<b>924</b> Dual Signal 	Dual legend Dual legend Welsh/English Treble Legend	SC-130 SC-132 SC-131
<b>924</b> Toucan Signal 	Toucan Legend (Blank) Toucan Legend Welsh/English (Blank)	SC-136 SC-138
<b>940</b> Puffin Signal 	Standard NFOV	SC-084 SC-941
<b>941</b> Demand Unit 	Standard Standard Welsh/English No Text (Blank)	SC-067 SC-069 SC-119
<b>942</b> Toucan Signal 	Standard NFOV	SC-086 SC-087
<b>946</b> Puffin Combine d Signal 	Standard Optics NFOV Standard Optics Welsh/English Standard Optics Welsh/English NFOV	SC-056 SC-061 SC-075 SC-076
<b>947</b> Toucan Combin ed Signal 	Standard Optics NFOV Standard Optics Welsh/English Standard Optics Welsh/English NFOV	SC-057 SC-062 SC-079 SC-081
<b>949</b> Pegasus Combin ed Signal 	Standard Optics NFOV	SC-108 SC-111
<b>Teroson MS939</b>	Note: This adhesive must be used	CS-098