



Nearside Signal PCB Spares & Detection Platform Compatibility



Technical Advice Note No. 22



Table of Contents	2
Introduction	3
Document Change Information	3
Externally mounted PSU and Separate LED Array	5
Integrated PSU and LED Array	6
Compatibility Chart	7



Introduction

This document has been produced to help overcome difficulties that may be encountered when looking at changing out PCB's on nearside signals that may have failed.

Over a number of years AGD have through continuous development and user specific changes had a number of different Issue levels for specific PCB's. These are now tabulated for the most common products further in this document.

Document Changes

Issue	Amendment Details	Date of Issue	By
A	First Issue of this document		GB
B	Update of document		MP
C	Incorrect part number on Page 4 - changed from CB-095 to CB-094 Included PCB numbers for AGD925 Mini Puffin Repeater in main chart page 5	28/01/2010	MP
D	Remove comment ref mini puffin repeater CB243&CB244 being DCM compatible and add comment when replacing individual older CB164 & CB165 PCB's the new ones need to be in pairs as not individually backward compatible.	28/03/2010	MP
2	Update to latest format and issue – no changes to technical content.	18/10/2010	MP
3	DCR4701:Update to cover latest PCB additions and add detection platform compatibility	04/02/2015	GB
4	DCR4975: Update to list of boards (page 5) as some boards are no longer serviceable.	27/11/2015	CS



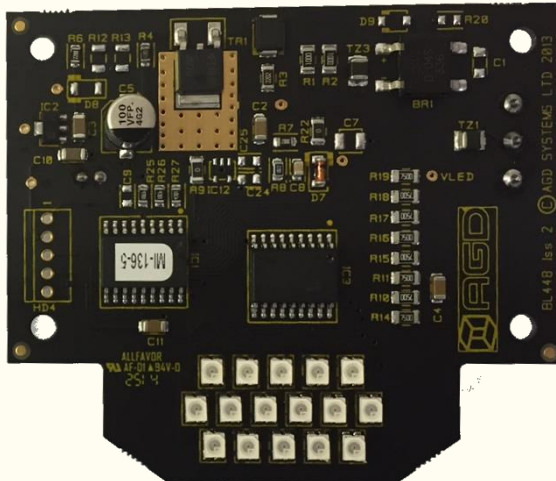
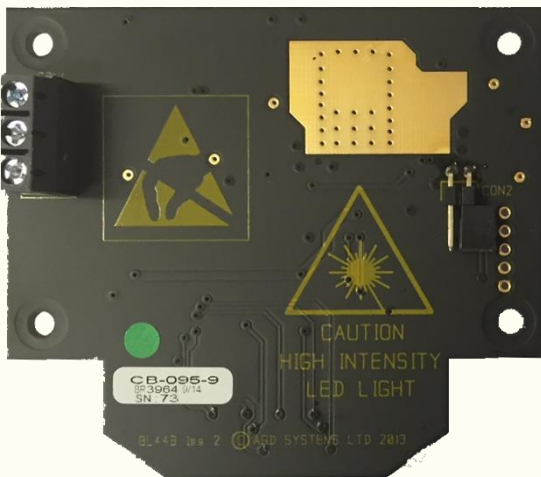
92X PCBs

Only two parts of the 92x series of nearside signals are supported for end user replacement.

The PSU that is located on the rear of the LED aspect housing can be replaced in the field. Using a new CB-094 please follow the instructions that are supplied as failure to set this item up correctly can result in failure of the LEDs or the reduced operational life of the LEDs



The new CB-095 WAIT LED aspect design is a direct replacement for the original design.





94X Integrated PSU and LED Array

Only PCB's that are fed directly from the termination block to the PCB aspect are supported.

If both aspects are connected together by a white jumper cable, you will need to replace both PCB's and Cable Looms. Alternatively, please return to AGD for evaluation and repair.

PCB Compatibility Chart

Please note that if a PCB is not listed below then it should be considered as discontinued and therefore not repairable.

Nearside Signal PCBs				
Previous Generations	(Previous) Repairable	Description	Current Generations	(Current) Repairable
CB-094	Yes	AGD92x series 48V PSU	CB-094	Yes
CB-095	No	AGD92x series Wait Indicator	CB-095 (latest issue)	Yes
CB-164	Yes	Red puffin mini repeater 48V	None	
CB-165	Yes	Green puffin mini repeater 48V	None	
CB-176	No	WAIT indicator	CB-277	Yes
CB-181	No	Halo Wait indicator 48V	CB-281	Yes
CB-190	Yes	Red Puffin Aspect 48V	CB-235	Yes
CB-191	Yes	Green Puffin Aspect 48V	CB-236	Yes
CB-193	No	Red Toucan Aspect 48V	CB-237 (latest issue)	Yes
CB-194	No	Green Toucan Aspect 48V	CB-238	Yes
CB-207	No	RED Puffin Aspect 48V	CB-235	Yes
CB-208	No	Green Puffin Aspect 48V	CB-236	Yes
CB-209	No	Red Toucan Aspect 48V	CB-237 (latest issue)	Yes
CB-210	Yes	Green Toucan Aspect 48V	CB-238	Yes
		Red Pegasus Aspect 48V	CB-229	Yes
		Green Pegasus Aspect 48V	CB-230	Yes
CB-243	Yes	Red puffin mini repeater 48V	None	
CB-244	Yes	Green puffin mini repeater 48V	None	
CB-245	No	Halo Wait indicator 48V	CB-281	Yes
		WAIT indicator 12V	CB-247	Yes
		5LED WAIT Indicator 48V	CB-277	Yes
		Red Puffin Aspect 12V	CB-278	Yes
		Green Puffin Aspect 48V	CB-279	Yes
		Temp Red Far side Aspect	CB-297	Yes
		Temp Green Far side Aspect	CB-298	Yes



Previous & Current Platforms

Where an item is marked as 'serviceable' this indicates an assessment protocol exists to ascertain its repairability. During this process the item may still fail a test and become Beyond Economic Repair (BER).

If assessed as repairable the item will be repaired and tested before return. The repaired item is subject to a one year return to base warranty period.

Compatibility Chart

Previous Generation	Description	Serviceable	Current Generation
AGD200	X-band MVD	Yes	206
AGD200 livewire	MVD for VMS applications	Yes	335
AGD201	Temp Radar	Yes	AGD202
AGD220	On crossing	Yes	226
AGD300	K-Band MVD	No	318
AGD305	K-Band MVD narrow beam	No	318
AGD306	K-Band MVD wide beam	No	N/A
AGD400	Stop Line detector	No	316
AGD402	Dual Zone detector	No	N/A
AGD410	K-Band Scoot detector	No	N/A
AGD420	Kerbside detector	No	640
AGD910	ILD diagnostics unit	No	N/A
AGD605	Stop Line detector	No	316
AGD620	Kerbside detector	No	640
AGD625	Kerbside detector	No	640
AGD920	Red/Green nearside signal (Puffin)	See 92X PCBs	940
AGD921	Demand unit	See 92X PCBs	941
AGD922	Red/Green nearside signal (Toucan)	See 92X PCBs	942
AGD923	Red/Green nearside signal (Pegasus)	See 92X PCBs	949
	Pelican WAIT demand unit	See 92X PCBs	AGD924
AGD925	Red/Green nearside signal small repeater	See 92X PCBs	N/A
AGD926	Combined Red/Green & Demand Puffin unit	See 92X PCBs	946
AGD927	Combined Red/Green & Demand Toucan unit	See 92X PCBs	947

All goods are subject to AGD Terms & Conditions of Sale (please refer to AGD website for current version).